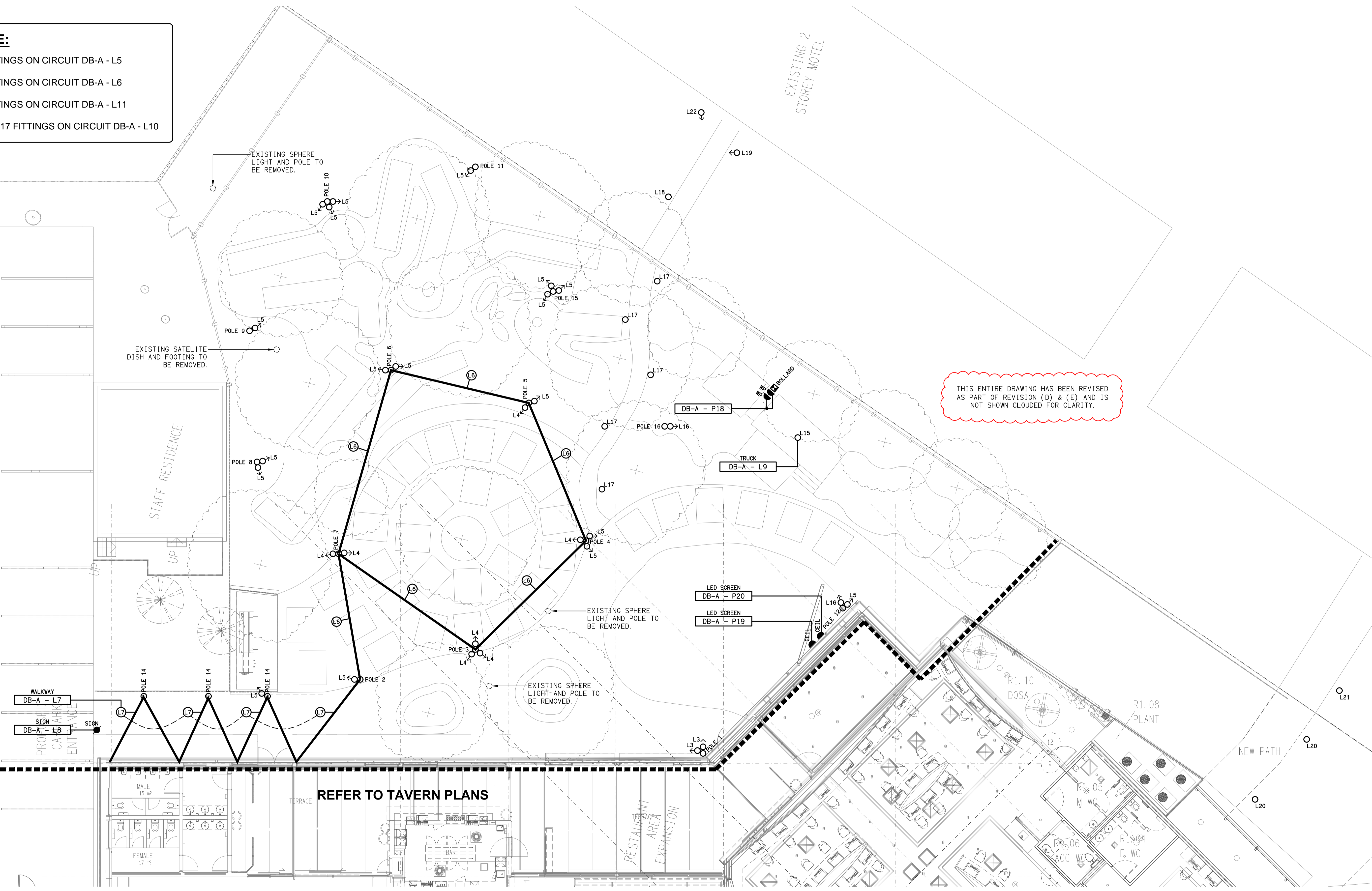


NOTE:
 L6 FITTINGS ON CIRCUIT DB-A - L5
 L4 FITTINGS ON CIRCUIT DB-A - L6
 L5 FITTINGS ON CIRCUIT DB-A - L11
 L16 & L17 FITTINGS ON CIRCUIT DB-A - L10



THIS ENTIRE DRAWING HAS BEEN REVISED AS PART OF REVISION (D) & (E) AND IS NOT SHOWN CLOUDED FOR CLARITY.

REFER TO TAVERN PLANS

ELECTRICAL DESIGN GROUP BRISBANE
 PTY LTD
 ACN 092 710 793
 TRADING AS:
 ELECTRICAL DESIGN GROUP

THE COPYRIGHT OF THIS DRAWING
 REMAINS THE PROPERTY OF THE
 ELECTRICAL DESIGN GROUP.
 USE FIGURED DIMENSIONS
 IN PREFERENCE TO SCALE.
 ALL DIMENSIONS TO BE
 VERIFIED ONSITE.

ELECTRICAL DESIGN GROUP
 ELECTRICAL BUILDING SERVICES CONSULTANTS
 BRISBANE GOLD COAST
 P.O. Box 15, Sherwood Q.4075
 Phone: (07) 3278 4375
 Email: brisbane@edg.net.au
 Web: www.edg.net.au

PROJECT:
**MARABOON TAVERN, EMERALD
 2025 ALTERATIONS**
 CORNER HOSPITAL ROAD & ESMOND STREET, EMERALD

E	TENDER	08/04/2026
REV:	DESCRIPTION:	DATE:
DRAWING: ELECTRICAL SERVICES OUTDOOR DINING PLAN		
SCALE: 1:100 UNO	AT A1	PROJECT NO: C3446a
		DRAWING NO: E07
		REVISION: E